

LG Cloud Device Thin Client

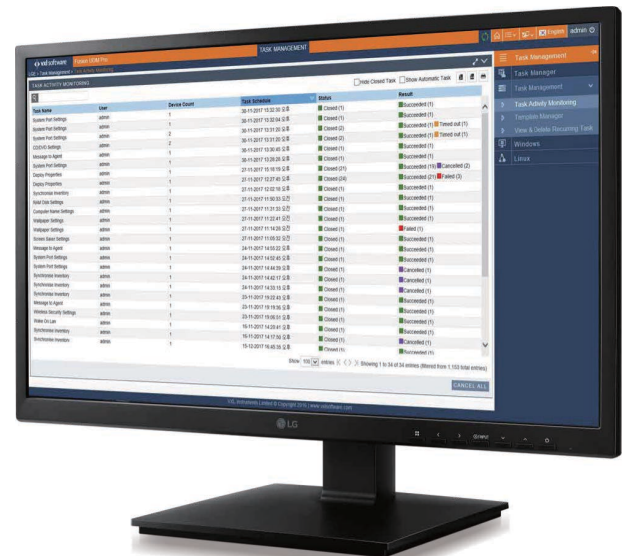
24" All-in-One Thin Client

24CK550W / 24CK550N



This product is IGEL READY, which means it has the ability to arrive ready to go with the simple, smart, secure IGEL OS 11.

- 23.8" Full HD (1920 x 1080)
- IPS Display
- Windows 10 IoT Enterprise
- VMware, Citrix, MS RDP Ready
- Fanless Design



Enhanced Productivity

• Dual Display Support

LG cloud device supports up to 4K resolution for connected displays.

• IPS Display

LG cloud device delivers clear images and vivid colors from any viewing angle.

• Built-in Speaker

With built-in 3W x 2ch speakers, you'll have an integrated audio solution.

Silent and Cost-efficient

The fanless design increases lifespan and also reduces replacement costs. The low noise and heat provide a pleasant office environment, and its lower power consumption reduces management costs.

Better Workplace Ergonomics

It supports tilt, swivel, pivot and height adjustment options for the best comfort at work. These ergonomics also make it easier to share content with your team members, leading to enhanced productivity.

LG Cloud Device - Thin Client

Available exclusively by
Computer Products Corp.
(800) 727-7733



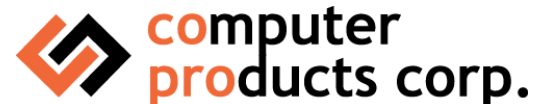
Specification

	Model Name	24CK550W / 24CK550N (24" All-in-One Thin Client)
Display	Inch	23.8"
	Aspect Ratio	16:9
	Panel Type	IPS
	Resolution	1920x1080
	Brightness (Typ./Min.)	250cd/m ² (Typ.), 200cd/m ² (Min.)
	Contrast Ratio	1,000:1 (Typ.)
	Response Time (GTG)	5ms (High)
	Viewing Angle (CR > 10)	178°/178°
System	Processor	AMD Prairie Falcon GX-212JJ
	OS	24CK550W: Windows 10 IoT Enterprise, 24CK550N: Non OS
	Memory	4GB DDR4
	Graphics	Integrated
	Storage (SSD)	32GB
Signal	Display Port	1xDP (Output)
	HDMI	1xHDMI (Input)
	USB	4 x USB2.0 / 2 x USB3.0
	Mic-in	Yes
	Headphone Out	Yes
Networking	Wireless	Intel Dual Band Wireless-AC 3168 1x1 AC (AGN support, BT 4.0 + LE Combo)
	BT	over BT4.0
	Ethernet	Yes (Gigabit)
Speaker	Built-in Stereo	Yes (3W x 2)
Dimension & Weight	WxDxH (with Stand)	21.0 x 9.4 x 20.2 (in) / 533.8 x 240 x 512.9 (mm)
	WxDxH (without Stand)	21.0" x 2.7 x 13.1 (in) / 533.8 x 67.6 x 333.1 (mm)
	Weight (with Stand)	13.4lbs / 6.1kg
	Weight (without Stand)	8.7lbs / 3.95kg
	VESA	100 x 100 (mm)
Stand	Stand	Tilt: -5~35 °, Swivel: 0~355 °, Height Range: 130mm, Pivot: ±90° (Bi-directional)
Security	TPM(Trust Platform Module)	Software TPM



This product is IGEL READY, which means it has the ability to arrive ready to go with the simple, smart, secure IGEL OS11.

Available exclusively by
Computer Products Corp.
 (800) 727-7733



- <https://www.lg.com/us/business/commercial-display>
- <https://www.twitter.com/LGCommDisplays>
- <https://www.facebook.com/LGcommercialdisplays>
- <https://www.linkedin.com/company/lg-commercial-displays-usa>
- <https://www.youtube.com/lgcommercialdisplayusa>
- 800-897-8726 | IT Sales

© Copyright 2019 ©LG Electronics USA, Inc., 2000 Millbrook Dr. Lincolnshire, IL 60069, USA
 All rights reserved. LG and the LG logo are registered trademarks of LG Corp. All other trademarks are the property of their respective owners. Prices and products may vary by dealer.
 Prices, designs, features and specifications are subject to change without notice.
 All screen images are simulated. | SPEC_Thin Client_24CK550W-550N_091924_LR

